



P R O D U C T I N F O R M A T I O N

NATURAL CORK UNDERLAYMENT

A Sound Barrier for All Types of Flooring

PRODUCT DESCRIPTION

Bostik® Cork Sound Control Underlayment provides an outstanding sound barrier for all types of flooring material including hardwood, natural stone, marble and ceramic tile. It contains millions of air filled pockets per cubic inch making it an ideal insulator of sound. Unlike synthetic underlayments that deteriorate after years of heavy use, and ultimately cause hollow-sounding floors, cork cells are very stable and do not break down. Cork provides a consistently solid sounding surface.

PRODUCT USES

Cork is the perfect choice for sound reduction. It has been independently tested according to ASTM standards for acoustical values.

SYSTEM WARRANTY

Bostik can supply a complete sound reduction system and offer one warranty to cover the entire flooring project. The System Warranty will include the following Bostik products:

- Patches and Underlayments
- Hardwood Adhesives
- Tile Mastics and Thin Set Mortars
- Cork Sound Control Underlayment

For job specific warranties, contact Bostik's Technical Service Department at 800/523-6530.

ACOUSTICAL RATING

Acoustical rating results below were generated from field testing:
1/4" (6mm) Cork Underlayment with Suspended Ceiling

	Hardwood		Ceramic Tile		Without Floor	
	STC	IIC	SC	IIC	STC	IIC
Concrete Slab 8"	56	62	56	60	60	77
Concrete Slab 6"	54	59	53	58		
Concrete Slab 4" with steel deck	60	65	60	64		
Wood Joist Construction	54	60	54	59		

CHEMICAL & PHYSICAL PROPERTIES

Binder	Polyurethane Resin	
Base	Composition of Cork Granules: Size 1-3	
Density	190 - 210 Kg/m ³	11.7 - 12.5 lbs/ft ³
Tensile Strength	5 - 8 Kg/cm ³	71 - 114 lbs/in ²
Recovery	75%	
Flexibility F5	Pass	
Floatation Tests	<ul style="list-style-type: none"> • 3 Hours in Boiling Water: Good • 1/2 Hour in Boiling 35% Hydrochloric Acid: Good • 2 Hours at 100°C in ASTM Oil: Good 	
Thermal Conductivity	0.042 Kcal/m ³ h °C	
Flammability	Cork Rolls are Considered Fire Retarding and Do Not Produce Toxic Exhalations During Combustion	
Dimensional Tolerance	Width/Length +/- 0.5 mm	
Size	Thickness +/- 0.2 mm 4' x 50' x 6mm Rolls	

INSTALLATION

Read and understand data sheet completely before beginning installation.

SURFACE PREPARATION : Surfaces must be clean, dry and smooth; free of voids, projections, loose materials, oil, grease, sealers, and all other surface contaminants. Maximum floor variation is 1/8" in 10 feet. Surface areas requiring patching or leveling should be repaired with portland cement-based materials such as Fast Patch 102™, SL-150™ or SL-155™ Fast Set Self-Leveling Underlayments.



09300

9

Cork Sound Reduction Systems

January 2003: Supersedes all previously published literature.

H13



APPLICATION

CORK INSTALLATION:

Apply cork in the following steps:

1. Unroll cork and cut sections approximately 2" wide off roll. Adhere this 2" isolation barrier around perimeter of the entire floor with any of the following Bostik products:

- Urethane Adhesives (Bostik's Best[®], BSTurethane or FastTack)
- Cartridge Filled Urethane (Chem-Calk[®] Heavy Duty Polyurethane Construction Adhesive)
- Acrylic-Based Mastics (Ultra-Premium Mastic, Multi-purpose Mastic, and Professional Grade Mastic)

Never mechanically fasten the isolation barrier with screws, nails or staples. This will severely diminish acoustical values of the barrier.

2. Unroll cork and cut to desired length. Lay cork loosely over area to be installed. Both ends of the roll must curl down towards the subfloor. If the end curls up, flip material over. Butt cork directly against the isolation barrier already installed.

3. Pull the loose laid material back at least half the length of the roll. Using a 3/16" x 5/32" v-notch trowel, apply any of the Bostik products listed above to the subfloor. Gently, return the pulled back material and roll in both directions with a 100 lb. roller. Repeat this procedure for the other half of the roll. Proceed to cover the entire floor making sure all joints are butted together tightly.

ALLOW CORK ADHESIVE TO TAKE A FIRM SET PRIOR TO INSTALLING HARDWOOD OR CERAMIC TILE FLOORING. Read adhesive manufacturers instructions to determine adhesive set time.

WOOD FLOORING INSTALLATION: Apply to cork as follows:

1. Follow industry standards and wood floor manufacturer recommendations for subfloor moisture content, design, layout and application of wood flooring materials.
2. Refer to adhesive data sheet for full wood flooring installation instructions.
3. After wood floor is installed, trim the isolation barrier 1/4" below the finished floor surface.

CERAMIC TILE FLOORING INSTALLATION: Apply to cork as follows:

1. Install ceramic tile according to applicable ANSI standards using Hydroment[®] Single-Flex[™]; Hydroment PM[™]; or Tile-Mate[™] Thin Set Mortars mixed with 425 Multi-Purpose Acrylic Latex Admixture[™] or 447 Flex-a-Lastic[™] Flexible Mortar Admixture.
2. Refer to setting mortars data sheets for complete instructions.
3. After the tile floor has been installed, trim the isolation barrier 1/4" below the finished floor surface.
4. Caulk the trimmed area with a bead of acoustical sealant; flush to the finished floor.

PACKAGING

Cork is available in 4' x 50' x 6mm rolls and 2' x 3' sheets. Also available in 3mm rolls.



Middleton, MA 01949
(800) 7-BOSTIK/(800) 726-7845

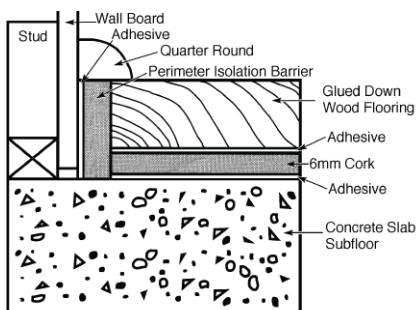
www.bostik-us.com

PLANT LOCATIONS

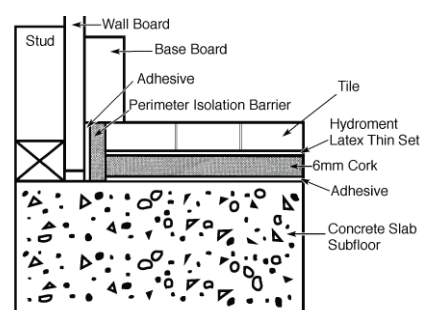
Temecula, CA 92590
Twinsburg, OH 44087
Conyers, GA 30207
Paulsboro, NJ 08066

HARDWOOD AND CERAMIC TILE INSTALLATION DIAGRAMS

Hardwood



Ceramic



LIMITED WARRANTY

Bostik, Inc. warrants that the product conforms with Bostik's written specifications and is free from manufacturing defects. A PURCHASER'S SOLE REMEDY FOR NONCOMPLIANCE WITH THIS WARRANTY SHALL BE THE REPLACEMENT OF THE PRODUCT OR REFUND OF THE PURCHASE PRICE. Purchasers may address their warranty claims to Bostik, Inc., 211 Boston St., Middleton, MA 01949, Attn: Customer Service or call Bostik at 1-888-592-8558. TO THE MAXIMUM EXTENT ALLOWED BY LAW, BOSTIK DISCLAIMS ALL OTHER EXPRESS OR IMPLIED WARRANTIES, INCLUDING WARRANTIES OF MERCHANTABILITY AND FITNESS FOR A PARTICULAR PURPOSE, AND LIABILITY FOR DIRECT, INCIDENTAL, CONSEQUENTIAL, OR SPECIAL DAMAGES.

Some states do not allow the exclusion or limitation of incidental or consequential damages, so the above limitations may not apply to you. This warranty gives you specific legal rights, and you may also have other rights which vary from state to state.



211 Boston Street • Middleton, MA 01949 • Customer Service 888-592-8558 • Technical Service 800-523-6530 • www.bostik-us.com